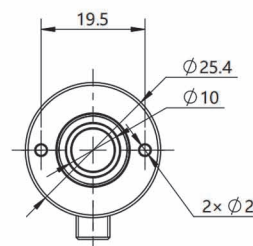


宽光谱准直器

Broadband Fiber Collimator

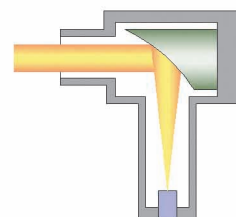
采用90° 离轴抛物面反射镜，这种反射镜的焦距在宽波长范围内保持恒定，所以在焦点调节准确的条件下就能准直宽光谱波长的光，成为准直多色光源准直或耦合的最佳选择。在透镜表面镀制450nm到20um波长范围的银膜，增加出射效率。该款准直器都可选配FC/PC、FC/APC或者Sma905接头。

Using a 90° off-axis parabolic mirror, the focal length of this mirror remains constant over a wide wavelength range. Therefore, it is the ideal choice for collimating wide spectral wavelength light when precise focal adjustment is required, serving as a collimated multi-color light source or coupling device. A silver coating is applied to the lens surface to enhance the output efficiency within the wavelength range of 450 nm to 20 μm. This collimator can be equipped with FC/PC, FC/APC, or Sma905 connectors.



- 表面镀制银膜(450 nm - 20 μm)、金膜(450 nm - 20 μm)或铝膜(250 - 450 nm)，反射率高

- 反射膜上镀有保护膜，增加环境适用性
- 反射式工作方式，整个反射带宽谱消色差设计
- 适合多色光准直出射或耦合到光纤中
- 标准接口设计，方便安装使用
- 可应用于光谱分析、荧光分析、气体遥测、水质成分分析、食品安全、医疗分析仪器



- Surface coated with silver film (450 nm - 20 μm), gold film (450 nm - 20 μm), or aluminum film (250 - 450 nm) with high reflectivity
- Protective film coated on the reflective film to increase environmental suitability
- Reflective working mode with a wide bandwidth spectrally dispersive design
- Suitable for multi-color light collimation or coupling into optical fibers
- Standard interface design for easy installation and use
- Applicable in spectral analysis, fluorescence analysis, gas telemetry, water quality analysis, food safety, and medical analysis instruments

Wavelength	450nm - 20um
AR Coating	Silver film / Aluminum film
Reflectance	> 97.5 % (450 nm - 2 μm)
	> 96 % (2 μm - 20 μm)
	> 90 % (250 nm - 450 nm)
Export beam diameter	2mm、4mm、8.5mm、12mm
	(Fiber NA=0.13)
Numerical aperture	0.4、0.36、0.167、0.216
Aperture	Φ7.6mm、φ11mm、φ16.5、Φ23.5mm
Connector	FC/PC、FC/APC、Sma905
Working temperature	-10~70°C